

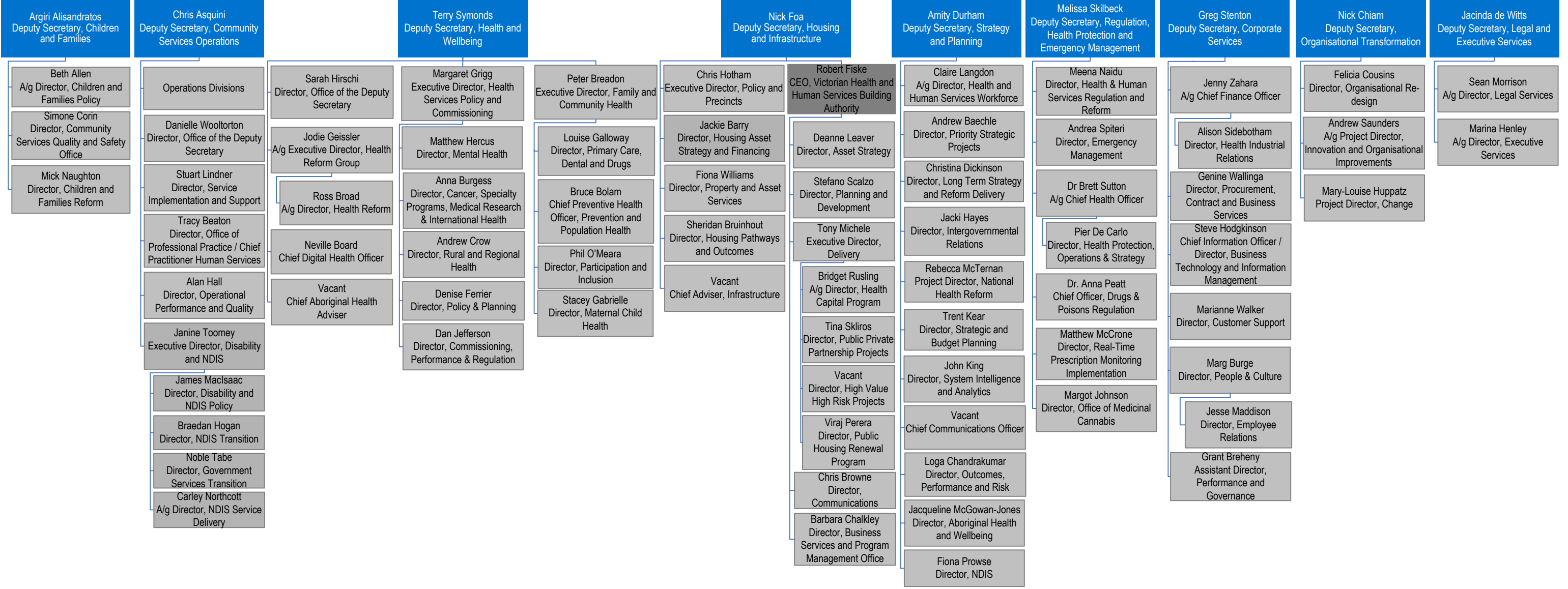
**Kym Peake**  
Secretary  
Alison Rutherford  
Director, Office of the Secretary

Administrative Offices

Sue Clifford  
CEO, Family Safety Victoria  
(Administrative Office)

Prof. Euan Wallace  
CEO, Safer Care Victoria  
(Administrative Office)

Lance Emerson  
CEO, Victorian Agency for  
Health Information  
(Administrative Office)



**CHRIS ASQUINI**  
Deputy Secretary, Community Services  
Operations

**ANNE CONGLETON**  
Deputy Secretary, North Division

- DOROTH WEE  
Director,  
Divisional Child Protection
- JO McINERNEY  
A/g Director,  
Corporate Services
- JOHN BRIDGFOOT  
Area Director,  
Mallee
- ANGELA PAPOUTSOLOU  
Area Director,  
North East Melbourne
- NATHAN CHAPMAN  
Area Director,  
Loddon
- STEVE BALLARD  
Director, Population Health,  
Planning and Aboriginal  
Engagement
- PENELOPE STEUART  
Area Director,  
Hume Moreland
- MICHAEL MEFFLIN  
Director,  
Emergency Management and  
Health Protection
- ANNA DONNE  
A/g Director,  
Disability and NDIS

**DANNY O'KELLY**  
Deputy Secretary, South Division

- MARK MELROSE  
A/g Director,  
Corporate Services
- LISA GARDNER  
A/g Director, Population Health,  
Planning and Aboriginal Engagement
- GREG BLAKELEY  
Area Director,  
Inner Gippsland
- JENNIFER LITSAS  
Area Director,  
Southern Melbourne
- KATHLEEN ALONSO  
Area Director,  
Bayside Peninsula
- DENISE HARRISON  
Director,  
Divisional Child Protection
- GEOFF HOULIHAN  
A/g Area Director,  
Outer Gippsland
- JASON HELPS  
A/g Director,  
Emergency Management and Health  
Protection
- SHARON FISHER  
A/g Director,  
Disability and NDIS

**JILL GARDINER**  
Deputy Secretary, East Division

- PAUL KNOWLES  
A/g Area Director,  
Inner East
- MARK ATKIN  
Director,  
Corporate Services
- RICHARD SLADE  
A/g Area Director,  
Ovens Murray
- PAUL O'KELLY  
Area Director,  
Goulburn
- KEITH SMITH  
A/g Area Director,  
Outer East
- PETER BEAUMONT  
A/g Director, Population Health,  
Planning and Aboriginal Engagement
- MARY REID  
Director,  
Director, Divisional Child Protection
- SANDY AUSTIN  
Director,  
Emergency Management and Health  
Protection
- SHAUNA WALTER  
A/g Director,  
Disability and NDIS

**PAUL SMITH**  
Deputy Secretary, West Division

- CHRISTINE PATTAS  
Area Director,  
Western Melbourne
- MONICA KELLY  
Director,  
Population Health, Planning and  
Aboriginal Engagement
- COLLEEN WILSON  
Area Director,  
Central Highlands
- OLIVIA GOODMAN  
Director,  
Corporate Services
- PAM WILLIAMS  
Area Director,  
Barwon
- SANDY BRIEN  
A/g Director,  
Divisional Child Protection
- ADAM REILLY  
Area Director,  
Wimmera South West
- MARK TRACEY  
Area Director,  
Brimbank Melton
- KIM O'SHAUGHNESSY  
Director,  
Emergency Management and Health  
Protection
- CHRISTINE OWEN  
Director,  
Disability and NDIS